

Estate Management

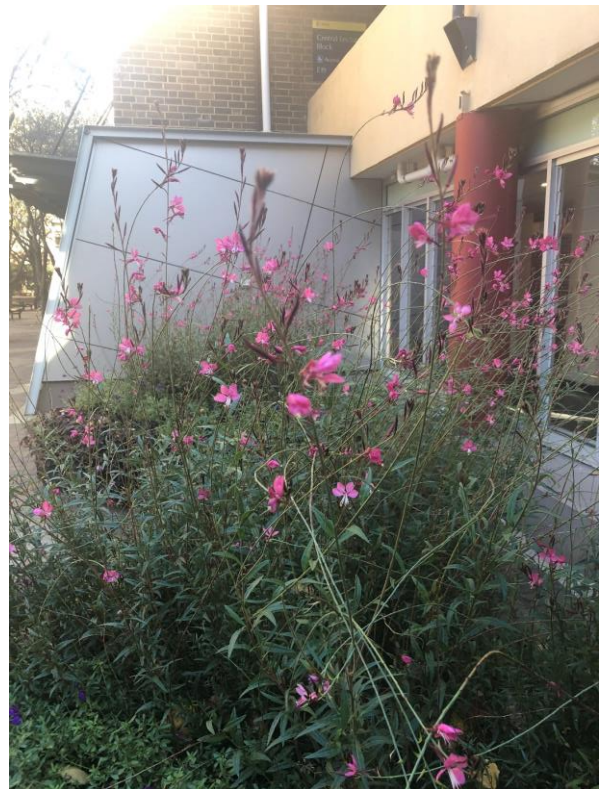
Campus Flowering Plants Useful Tips

Bracteantha - Native Paper Daisy



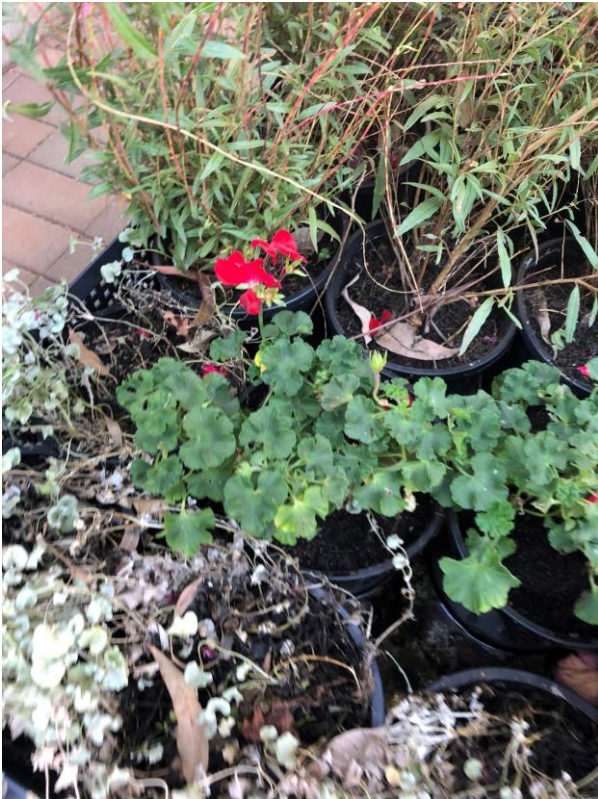
Cultural hints: Full Sun, well drained soils, cut back foliage after flowering in late Autumn / Winter for spring flowering

Oenothera lindheimeri – Butterfly bush



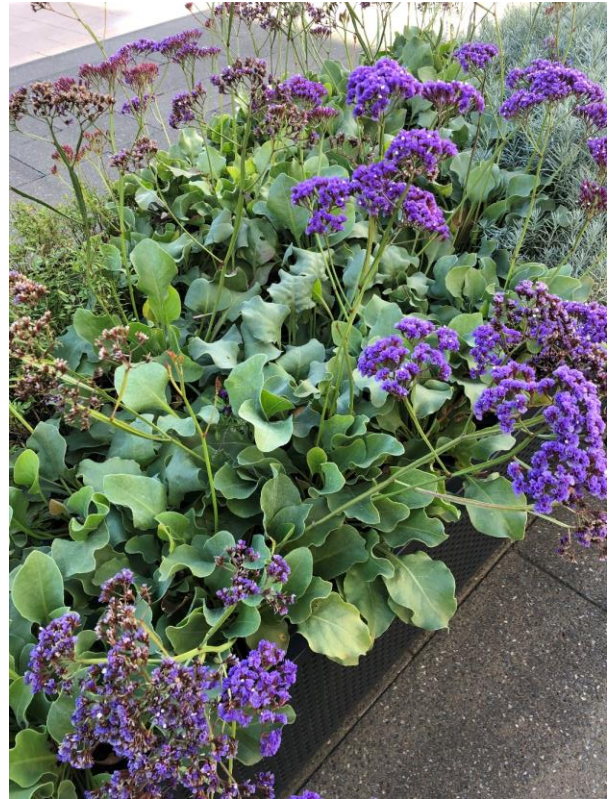
Cultural hints: Full sun, most soils, drought tolerant, cut back after flowering

Pelagonium - Geranium



Cultural hints: Most soils if well drained. Full sun but avoid hot afternoon sun. Let plants dry out between watering. Cut back and fertilise early Spring. Likes compost.

Limonium perezii – Sea lavender



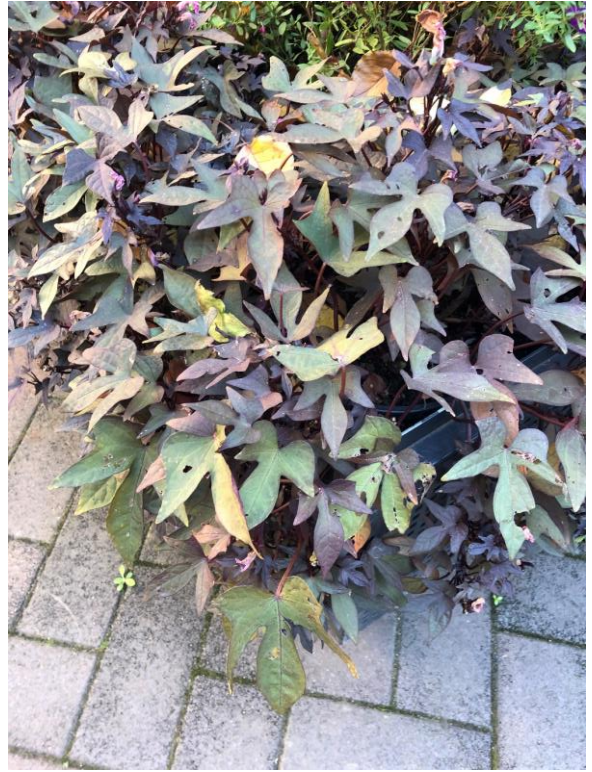
Cultural hints: Full sun, most well drained soils, drought tolerant. Clumps can be divided every two years.

Gazania linearis



Cultural hints: Sunny, well drained soils. Keep moist in summer.

Ipomea batatas – Sweet potato



Cultural hints: Moist well drained soils. Shade to full sun.

Heuchera – Fire Alarm - Coral Bells



Cultural hints – Full sun to shade though prefers partial shade. Well drained soils and keep moist. Enjoys some compost over the roots.

Salvia -Mirage Purple



Cultural hints: Full sun, well drained soils. Fertilise monthly.